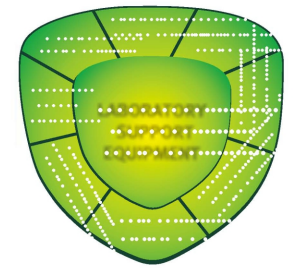




Asian Biotechnology Inc

心系健康 诚信天下 For health Be credible



Performance parameters

| Ventilation rate | Pressure difference | Air speed | Static cleanliness | Noise |
|------------------|---------------------|-----------|--------------------|-------|
| ≥40 times/h      | ≥10Pa               | <0.15m/s  | ISO 5级             | ≤50dB |

Cage parameters

| Type      | Order code        | Overall dimension(mm)                                |
|-----------|-------------------|--|
| Mice cage | BCR-MI03-PSU/PPSU | 398x183x192 (With label slot and drinking bottle)    |
|           |                   | 390x183x172 (Without label slot and drinking bottle) |
| Rats cage | BCR-MI03-PSU/PPSU | 488x320x257 (With label slot and drinking bottle)    |
|           |                   | 482x320x240 (Without label slot and drinking bottle) |

Technical parameters-mice rack

| Order            | Layer x column | Cages | Cage frame | (LxWxH) Cage frame size mm | Cage frame Quantity | (LxWxH) mm Installation overall size (With main machine) |
|------------------|----------------|-------|------------|----------------------------|---------------------|--|
| BCR-MI03-84-C11  | 8x8            | 64    | Single row | 525x1592x1974              | 1                   | 830x2049x1974  |
| BCR-MI03-84-C12  |                | 128   |            |                            | 2                   | 830x3634x1974  |
| BCR-MI03-72-C11  | 8x9            | 72    | Single row | 525x1788x1974              | 1                   | 830x2243x1974  |
| BCR-MI03-72-C12  |                | 144   |            |                            | 2                   | 830x4022x1974  |
| BCR-MI03-128-C11 | 8x8            | 128   | Double row | 721x1592x1991              | 1                   | 877x2069x1991  |
| BCR-MI03-128-C12 |                | 256   |            |                            | 2                   | 877x3674x1991  |
| BCR-MI03-144-C11 | 8x9            | 144   | Double row | 721x1788x1991              | 1                   | 877x2263x1991  |
| BCR-MI03-144-C12 |                | 288   |            |                            | 2                   | 877x4082x1991  |

Technical parameters-rat rack

| Order           | Layer x column | Cages | Cage frame | (LxWxH) Cage frame size mm | Cage frame Quantity | (LxWxH) mm Installation overall size (With main machine) |
|-----------------|----------------|-------|------------|----------------------------|---------------------|--|
| BCR-RI02-20-C11 | 5x4            | 20    | Single row | 550x1372x1837              | 1                   | 830x1829x1837  |
| BCR-RI02-20-C12 |                | 40    |            |                            | 2                   | 830x3194x1837  |
| BCR-RI02-25-C11 | 5x5            | 25    | Single row | 550x1705x1837              | 1                   | 830x2162x1837  |
| BCR-RI02-25-C12 |                | 50    |            |                            | 2                   | 830x3880x1837  |
| BCR-RI02-30-C11 | 5x6            | 30    | Single row | 550x2038x1837              | 1                   | 830x2495x1837  |
| BCR-RI02-30-C12 |                | 60    |            |                            | 2                   | 830x4526x1837  |

\* According to the actual needs of customers, we provide customized services

Contact Information :

Asian Biotechnology Inc

Unit # 001, Building A-1, Dubai Silicon Oasis DDP,  
Dubai PO Box No.342001 United Arab Emirates.

Email ID : info@abidubai.com

Web : www.abidubai.com

Manufactured By:

SHINVA MEDICAL INSTRUMENT CO., LTD

2009 Xinhua Road Zhoucun district Zibo City

Email ID : zhouxin716@shinva.com

Web : www.shinva.com



BCR - I Series  
Individually Ventilated Cages Rat and Mice



BCR-I series Individually Ventilated Cages are suitable for the feeding of SPF rodents. Each cage provides independent air supply and ventilation, which can realize strict biological control of animal living space and effectively prevent cross-infection between different cages. The system can achieve positive and negative pressure control.

This product is widely used in Experimental Animal Centers, Drug Testing Centers, Centers for Disease Control and other Quarantine Agencies.



## > IVC Cage

- Energy saving  
Compared with open-breeding, sealed cages can achieve waste gas discharge and reduce odor emissions, which will greatly improve the animal room environment and effectively reduce ventilation rate of animal room. Energy saving can be more than 30%.
- Work stable  
Programmable Logic Controller (PLC) and ventilation fans are world famous brand which is stable and reliable.
- Ventilation rate, pressure difference, temperature and humidity detection  
High-precision wind speed, pressure difference, temperature and humidity detector can realize on-line monitoring for ventilation rate, pressure difference, temperature and humidity in cages.
- Ammonia gas concentration detection  
A high-precision Ammonia gas concentration sensor is installed in the main exhaust duct to on-line monitor the Ammonia gas concentration in the cage.
- Day and night operation mode  
Automatically switch the day and night operation mode to avoid influence the animal activities and rest and to protect the animal welfare.
- Uninterrupted power supply (UPS)  
Built-in uninterruptible power supply (UPS) can make the fan continues to work once the external power supply is interrupted.
- Alarm detection  
The main machine has multiple alarms such as abnormal parameters, abnormal working conditions of components, filter clogging, abnormal power failure, etc. to ensure stable operation of equipment.



- Test report  
The machine has passed the test of authoritative third-party organizations, the parameters have been fully demonstrated and the performance is excellent.

## > Cage frame

- SUS304 stainless steel, easy to disassemble and easy to clean.
- Each position of the cage frame has a coordinate mark to facilitate the recording of the cage position.
- The cage guide rails are equipped with a positioning indicator, which is convenient for confirming whether the cage is in place.



## > Cage

- Material (PSU/PPSU)  
The cages are made of high quality and new materials, with good stability and light transmittance, and can be sterilized at high temperature. The PSU can be used for more than 150 cycles of high-temperature sterilization. The PPSU can be reused for more than 350 cycles of high temperature sterilization.
- Size optimization  
The stacking height of cages is reduced to less than 50mm, which effectively reduces stacking space and sterilization costs.
- Cage flexible seal  
The cage is sealed with a double hollow medical silicone ring to ensure the airtightness of the cage.  
Optimized designed cover buckle  
Stainless steel cover buckles reduce the failure rate and extend the service life of the cages.
- Cage air intake and exhaust valve  
Non-intrusive structure intake and discharge valve avoids cross-infection between different cages. The fan-shaped diffuse flow channel reduces the air speed inside the cage.
- Life window  
On the top of the cage cover has compressed life window with medical silicone seal ring which can connect with outside through the aperture of 0.2μm filter membrane to ensure the aseptic isolation of the animal and outside and to avoid suffocation death caused by cessation. The filtration membrane can be washed or autoclaved.

