

Tunnel Washer Technical Parameters Tab

Model	BWS-T-A-600	BWS-T-A-800	BWS-T-A-1000
Inner chamber size (L×W×H) mm	4400×610×500	4400×750×500	4400×900×500
Overall size (L×W×H) mm	6000×1260×1950	6000×1400×1950	6000×1550×1950
Drying function	√	√	√
Water consumption	0.8ton/hour	1ton/hour	1.1ton/hour
Water temperature	≤70°	≤70°	≤70°
Power source	380V/35kW 220V/1kW	380V/35kW 220V/1kW	380V/35kW 220V/1kW
Steam pressure	0.3-0.5Mpa	0.3-0.5Mpa	0.3-0.5Mpa
Steam flow	260Kg/h	260Kg/h	260Kg/h
Water requirement	0.2-0.5Mpa (Recommend the use of softened water), water flow100L/minutes		
Air compressed	0.4-0.7Mpa, water flow100L/minutes		

Model	BWS-T-B-600	BWS-T-B-800	BWS-T-B-1000
Inner chamber size (L×W×H) mm	2400×610×500	2400×750×500	2400×900×500
Overall size (L×W×H) mm	4000×1260×1950	4000×1400×1950	4000×1550×1950
Drying function	×	×	×
Water consumption	0.8ton/hour	1ton/hour	1.1ton/hour
Water temperature	≤70°	≤70°	≤70°
Power source	380V/11kW 220V/1kW	380V/11kW 220V/1kW	380V/11kW 220V/1kW
Steam pressure	0.3-0.5Mpa	0.3-0.5Mpa	0.3-0.5Mpa
Steam flow	260Kg/h	260Kg/h	260Kg/h
Water requirement	0.2-0.5Mpa (Recommend the use of softened water), water flow100L/minutes		
Air compressed	0.4-0.7Mpa, water flow100L/minutes		

**Contact Information :**

**Asian Biotechnology Inc**

Unit # 001, Building A-1, Dubai Silicon Oasis DDP,

Dubai PO Box No.342001 United Arab Emirates.

Email ID : info@abidubai.com

Web : www.abidubai.com

**Manufactured By:**

**SHINVA MEDICAL INSTRUMENT CO., LTD**

2009 Xinhua Road Zhoucun district Zibo City

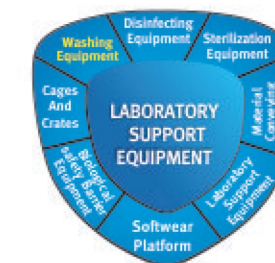
Email ID : zhouxin716@shinva.com

Web : www.shinva.com



Asian Biotechnology Inc

心系健康 诚信天下 For health Be credible

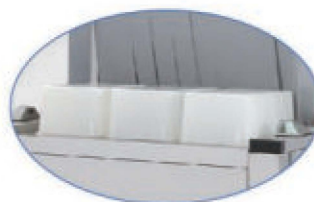


**BWS-T Series Tunnel Washer**

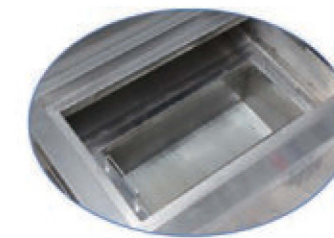


BWS-T series Tunnel Washer is special design for the animal laboratory industry, special for disinfect animal cage and drinking flasks. This series is suitable for large experimental animal breeding center. To realize the automation and continuous cleaning, drying treatment, meet the demand of industrial production.

- Rapid cleaning technology  
Large flow, high pressure, comprehensive strength cleaning, ensure the cleaning effect.
- Rapid drying technology  
Unique drying system, Multi-stage heating, adjustable double knife wind, hot air recycling.
- Intelligent water-saving technologies  
A variety of water saving model, Rinse water recycling.
- Comprehensive operation safety performance  
The emergency switch and alarms are settled on both front and back side.  
Mechanical transmission chain protection structure, protect the safety of the operator.



- Unique cleaning filter design  
Convenient sewage collection processing structure, it is suitable for animal cage with a large quantity.
- Modular chamber design  
The chamber uses the packing modular design, convenient maintenance and transport.
- Speed is adjustable, mechanical transmission structure  
Depending on pollution items, the drying of condition to set different transmission speed.
- No dead angle design  
Module with no dead angle design, reduce the residual pollutants, to ensure cleaning items.
- Automatic filling detergent  
According to the technological requirements, the equipment can fill the detergent quantitatively and regular, to adapt cages cleaning requirements in different levels of pollution.
- Easy to observe  
Visual window of each function module has convenient observation, convenient to observe running status and maintenance.
- Users according to the pollution of cage box, choose different modes of water saving, on the premise of guarantee the cleaning effect, to save water.
- Unique design of pipeline technology to ensure the cleaning effect under the premise of rinse water recycling, water consumption, reduce equipment cost.



Processing reference table

Cage size (mm)	290×180×160	410×163×160	370×260×170	450×270×200
Processing /hour	1551	1216	729	600